
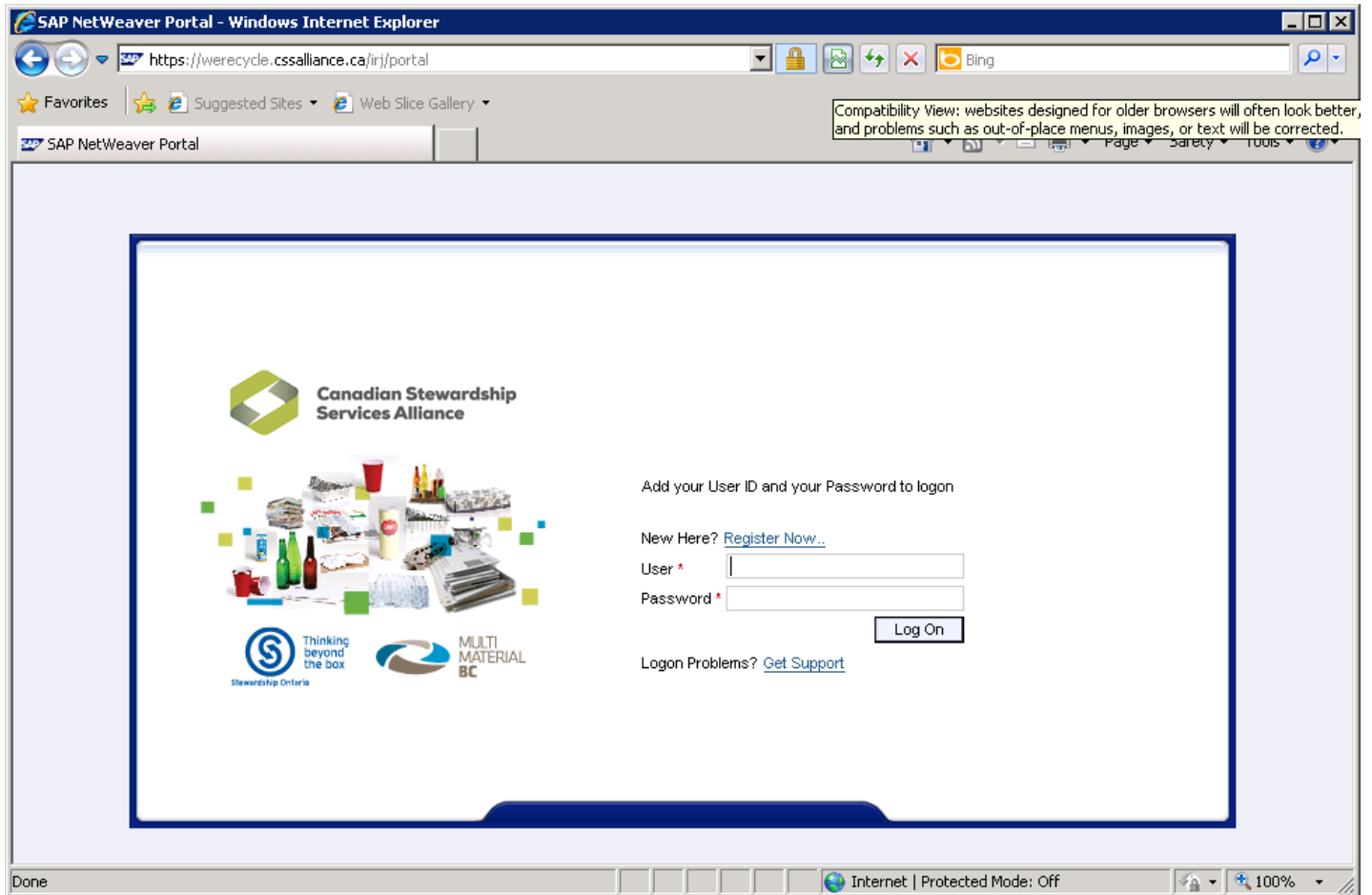




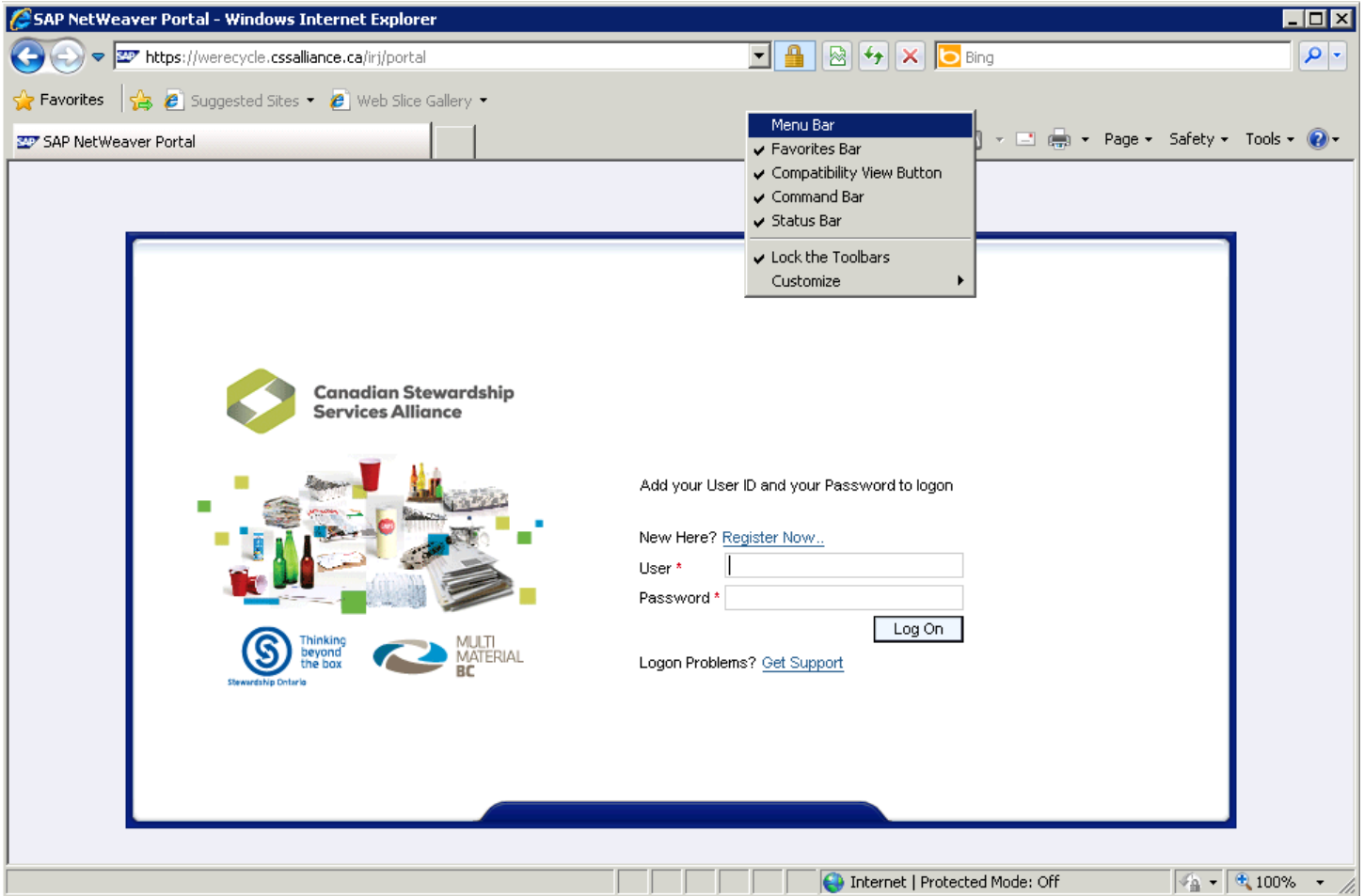
## Enable Pop-ups for the WeRecycle Portal in Internet Explorer 9

- 1) Please ensure compatibility mode is enabled before continuing. To do so, click on the **Compatibility View** button  on the far right of the **Address Bar**.



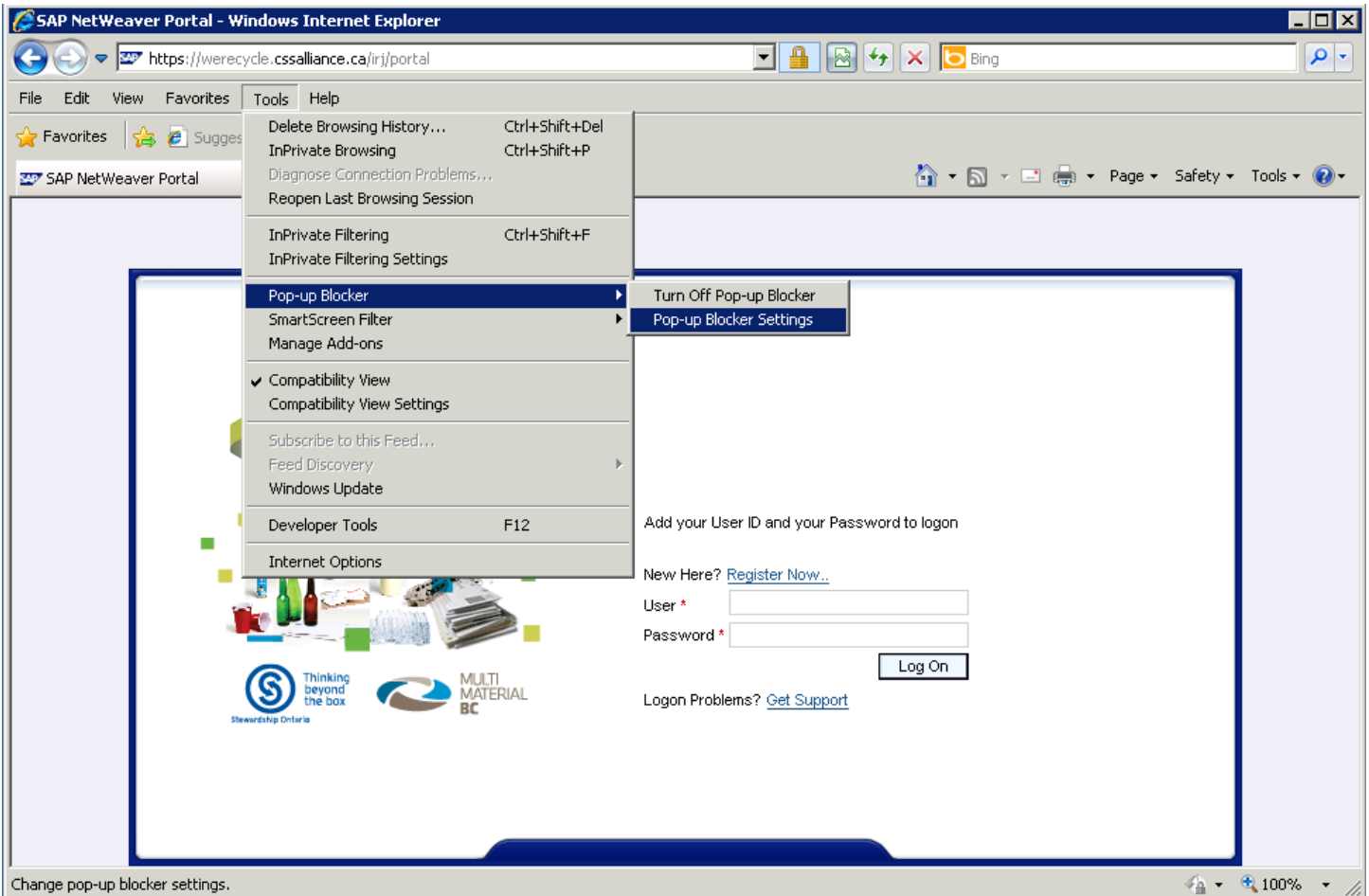


- 2) You may need to enable your Menu bar before continuing. To do so, right click on an empty space at the top of your browser and click on **'Menu bar'**. You can also press the **Alt** key on your keyboard to make the Menu bar temporarily visible.





3) From the Menu bar, click on **Tools**, then **Pop-up Blocker**, and final **Pop-up Blocker settings**

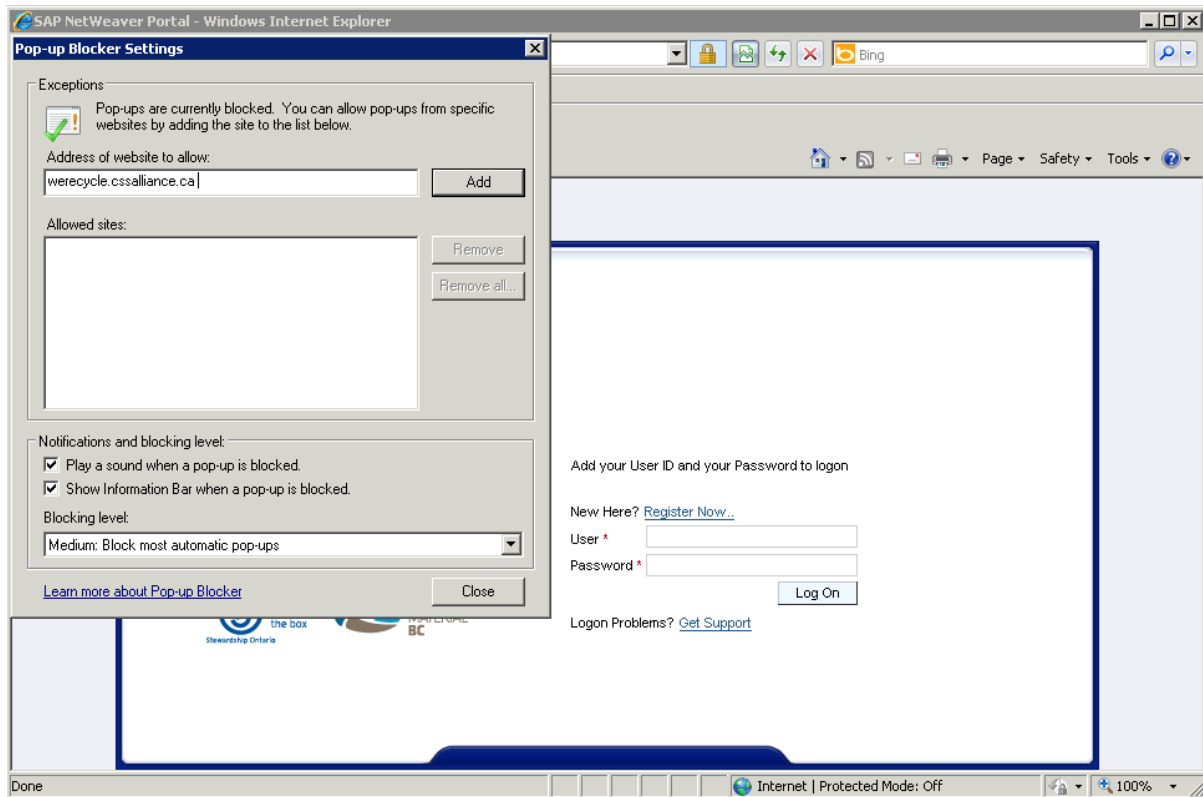


Change pop-up blocker settings.

100%



- 4) In the **Pop-up Blocker Settings** window that appears, type in **werecycle.cssalliance.ca** under 'Address of website to allow:' and click on the **Add** button. Once the entry for **werecycle.cssalliance.ca** appears under **Allowed sites**: click on the **Close** button to finalize your changes. Close Internet Explorer and access the WeRecycle web portal again to log in.



- 5) Your **Allowed Sites** entries should now include **werecycle.cssalliance.ca**.

